




Preview

Having trouble viewing this email? [click here.](#)

Share with your friends   



Earful

presented by Metropolitan NeuroEar Group

April 2012



Sanjay Prasad MD FACS is a board certified physician and surgeon with over twenty years of sub-specialty experience in Otolaryngology, Neurotology, and cranial base surgery. He has successfully performed over 4,000 ear operations.

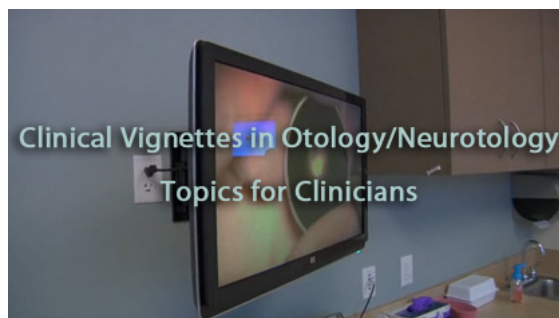
2nd Opinion Service
Patients can upload imaging studies through our website.

Please [click here](#) to have your CT or MRI reviewed.

Philanthropy

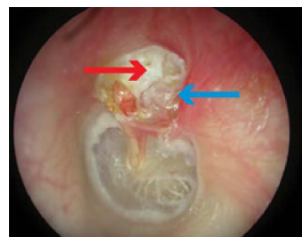
Need to Hear
Foundation
[Learn More!](#)

List of Services



Cholesteatoma

[Visit Our Website for a Video on Cholesteatoma](#)



TM with cholesteatoma



Normal TM

Overview

A cholesteatoma is a benign growth of skin involving the eardrum and the middle ear. As it grows it can spread into the mastoid, inner ear, facial nerve, and brain. Cholesteatomas form as a result of Eustachian tube dysfunction.

Close

Legal

- [Terms and Conditions](#)
- [Privacy Policy](#)
- [Terms of Use](#)
- [Anti-Spam Policy](#)
- [CAN-SPAM Compliance](#)

Follow Us

- [Like Us on Facebook](#)
- [Follow Us on Twitter](#)

© 2012 PrimeSender.com. All Rights Reserved.